

## Acclimatisation of material

Please make sure flooring materials are removed from packaging at least 48 hours prior to installation, (tiles and planks may be stacked, but must be rested flat) and allowed to condition in the room where the installation is to take place. Room temperature should be kept between 18-26°C.

To achieve a more natural look to your floor, we recommend that the product in this box is shuffled before installation.

## Subfloors

All subfloors should be solid, smooth, sound, clean, dry and dust-free before Palio Clic flooring is installed.

- Concrete/Screeds: All cracks and joints should be filled and the floor needs to be level in accordance with the applicable standard.
- Quarry Tiles/Mosaics/Terrazzo/Ceramics: Level any grout lines with a concrete or screed filler and make the floor solid.
- Timber floors: These should be solid with little flexibility. All loose boards must be firmly fastened and gaps filled.
- Linoleum/Thermoplastic/Vinyl/Cork Floors: Make sure these floors are solid; fix any loose tiles.
- Metal and Painted Floors: Remove any loose paint or other finishes.
- Other Floors: Consult your supplier.

Products must be laid only on subfloors with a moisture level below 75% when tested with a hygrometer or according to your country's

standard. If hygrometer readings are above 75%RH it is necessary to install a surface damp proof membrane (DPM).

## Underlay

An underlayment is not required for installation but can be used if additional sound insulation is required.

## Installation

Palio Clic should be laid with an empty expansion gap of 5mm around the perimeter of the room and all fixed objects, including pipes. Where the flooring run exceeds 15 metres in width or length insert a 5mm expansion joint, then repeat every 15 metres thereafter. Skirting boards may be removed and door frames undercut to allow for possible expansion, if required.

Plank products should be laid with staggered joints, at a distance of at least 100mm.

Tiled products should be laid broken bond to give the floor maximum stability and enhance the aesthetics of the floor.

## Exclusions

Do not use Palio Clic in rooms that are exposed to large temperature fluctuations.

## Tools

For a successful installation the following tools will be necessary – rubber mallet, utility knife, wall spacers, carpenters square, hand roller (optional), pull bar.

1. Install the first tile or plank with the tongue side facing the wall, fit 5mm spacers between the plank and wall. (Fig. 1)
2. Lay the first row, ensuring the short edges are clicked together. (Fig. 2)
3. Cut the last piece of the row to size making sure that there is a 5mm gap between the end of the row and the wall. (Fig. 3)
4. Start the second row by clicking the tongue into the groove holding the tile or plank at an angle (approximately 30°), then push the tile or plank firmly into the groove of the first row. (Fig. 3)
5. Fit the next tile or plank by clicking the tongue and groove together along the short edge. Ease the tongue and groove together on the long side by angling the tiles/planks together. Continue to fit tiles/planks across the room until the row is complete. We recommend using a rubber mallet and an off-cut of the product or a hand roller to securely fix the tiles/planks together. (Fig. 4 & 5). A pull bar can be used to pull the product together around the edges of the room. (Fig. 6)
6. Repeat section 4 and 5 until the installation is complete.
7. Once the floor is fitted, remove the spacers; sweep the floor with a soft brush. Fix the skirting boards or suitable edge trim to cover the expansion gaps. These should be fixed to the wall and not the floor. (Fig. 7 & 8)

Fig. 1

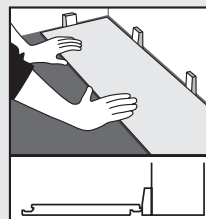


Fig. 2

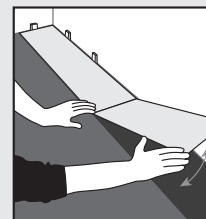


Fig. 3

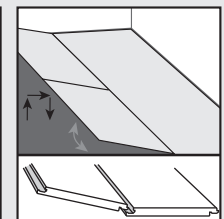


Fig. 4

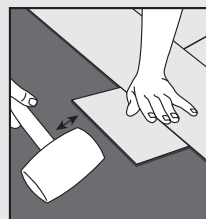


Fig. 5

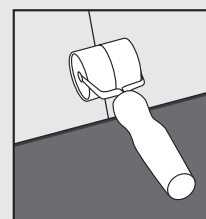


Fig. 6

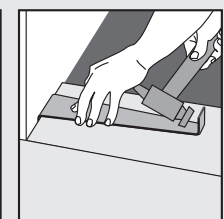


Fig. 7

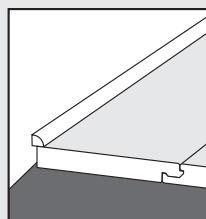
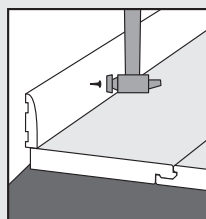


Fig. 8



## Taking care of your floor

- Regularly sweep the floor to remove loose dirt or grit as these can cause fine scratches (we don't recommend you use a steam mop or a vacuum cleaner as they may damage the surface of the floor).
- For a thorough clean, use a pH neutral cleaner. Avoid the use of regular household cleaners and bleach-based detergents. These could make the floor slippery or cause discolouration.
- Mop up spills as soon as possible, using a pH neutral cleaner, to reduce the risk of staining.
- Use entrance mats to protect against grit and moisture (ensure they are non rubber-backed to prevent any discolouration of the floor).
- Avoid sliding or dragging furniture or other objects across the floor - use floor protector pads to prevent scratching.
- Use load bearing castors to protect against indentation from heavy furniture.
- Suitable for underfloor heating up to 26°C.
- Room temperature should remain between 13-27°C.